

WARNING: HIGH VOLTAGE! DISCONNECT THE BATTERY BEFORE INSTALLING OR SERVICING ANY IGNITION SYSTEMS COMPONENTS. Failure to follow these instructions and the vehicle owners' handbook and shop manual could result in serious personal injury, death and or damage to property. This part is designed to be installed by a mechanic that is familiar with European automobiles and safety standards.

General Information

The 944NA906 kit is an ignition upgrade for the Porsche 944 naturally aspirated engine. The 944 Turbo has a different kit, part number 944TC906. This kit will install in minutes without drilling holes in the car or cutting and splicing the engine harness wiring. No special tools are required to install these parts and no modifications to the engine are required.

We recommend that fresh spark plugs be installed with this kit. Use the stock spark plugs, do not use fine wire "platinum" spark plugs. Spark gaps can be increased to 0.045". For engines with high performance modifications, we recommend the Beru Ultra X spark plugs part number UX56.

Kit Components

Your kit includes the following parts:

6MM hex bolt, washer and nut.

10-32 screw, washer and nut.

6" nylon cable tie, 2 pcs.

10" nylon cable tie

Insulating boot, 2 pcs.

Sheet metal mounting bracket.

Cube ignition module.

Cylinder type ignition coil.

Stainless steel cable ties, 2 pcs.

Sheet metal screws, 3 pcs.

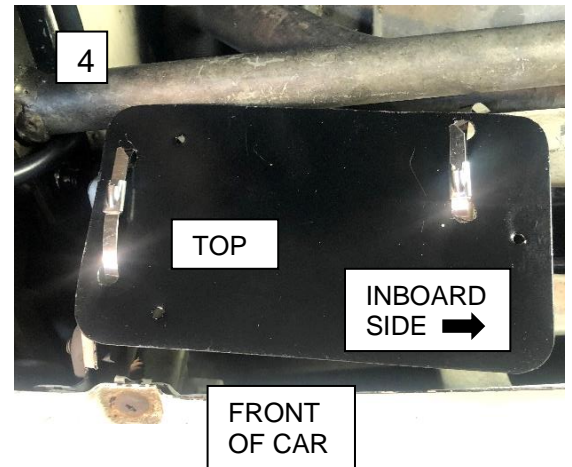


Installation Instructions

1. Disconnect the battery minus terminal. Loosen the clamp holding the power steering reservoir to the bracket and remove the reservoir from the bracket and lay it in the engine compartment away from the front of the car as shown in picture 1. Then remove the clamp holding the old ignition coil and then remove the black and green wires from the coil. Note the routing of the OE coil wire harness between the coil and the strut tower. Remove the old ignition coil from the engine bay.

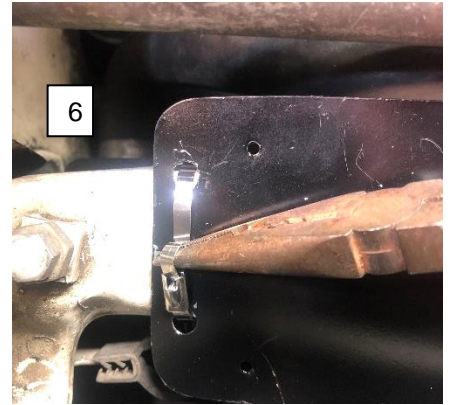
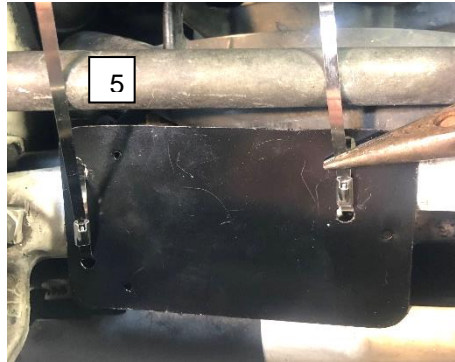
WARNING: Remove the negative terminal of the battery. Failure to disconnect the battery may cause serious personal injury, death and or damage to property.

2. Place the two cable ties between the hood latch struts and the coolant hose on the passenger side of the hood latch as shown in picture 2. Place the sheet metal bracket onto the cable ties. Note the orientation of the cable tie clasp in picture 3 and the bracket orientation in picture 4.



3. Cinch down the cable ties until the bracket is flat against the strut on the outboard side of the strut as shown in picture 5. Cut off the excess tie leaving about a half an inch stub. Grab the tie stub with your pliers and rotate them clockwise as shown in picture 6. This will tighten the cable tie securing the bracket in place. Repeat with the other cable tie.

CAUTION: Failure to sufficiently tighten the cable ties will cause the module to interfere with the headlight torque arm.

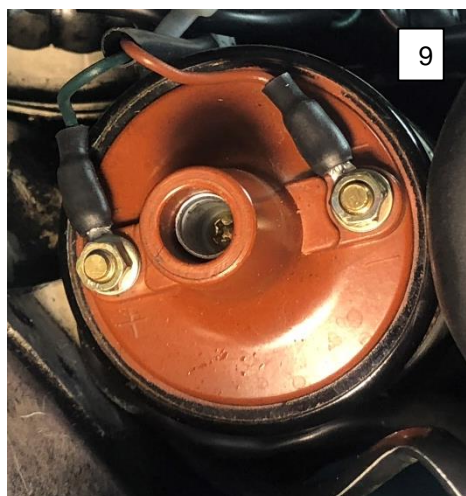
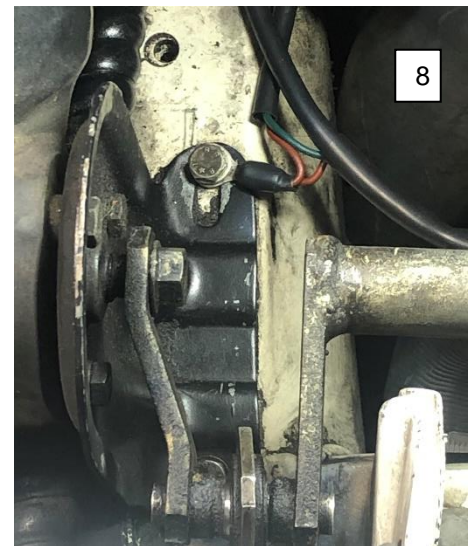
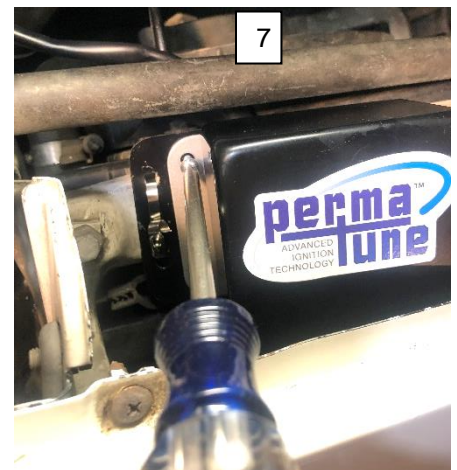


4. Thread the Cube module harness wires between the bracket and the headlight actuator lever. Secure the module to the bracket by screwing the three sheet metal screws into the pilot holes of the bracket as shown in picture 7. There are three pilot holes drilled in the bracket.

5. Route the harness from the module to the headlight actuator mounting bracket. Connect the harness brown wire loop terminal to the bracket under the 6 MM bolt as shown in picture 8. The picture shows the headlamps in the up position. Note the orientation of the loop terminal. The wire harness between the module and the bracket will be below and clear of the moving headlamp components.

CAUTION: Failure to route the harness clear of the moving parts can cause damage to the harness and or headlight mechanism.

6. Install the new ignition coil in the same location as the old one. Place the coil in the mounting bracket with the mounting strap approximately at the center of the vibration pad on the ignition coil and with the coil terminals at a convenient orientation. Then secure the coil with the 6 MM bolt. Route the harness from the headlight mechanism bracket to the ignition coil and connect the blue wire to the + terminal and the brown wire to the – terminal as shown in picture 9.



7. Connect the Perma-Tune harness black and green wires to the car harness green and black wires that were removed in step 1. Use the #10 hardware for the green wires and the 6 MM hardware for the black wires as shown in picture 10. Then cover the terminals with the boot provided and secure them with the 6" nylon cable ties as shown in picture 11.

NOTE: You may elect to cut the loop terminals off and use a marine type wire splice instead of using the loop and bolt terminals.

8. Route the car harness between the coil and the strut tower as was noted in step 1. Secure the two boots to the coil wire harness with the 10" nylon cable tie as shown in picture 12.
9. Re install the high Voltage coil wire to the coil. Re install the power steering reservoir. Connect the battery minus terminal.
10. Drive your car to the track and have some fun!

